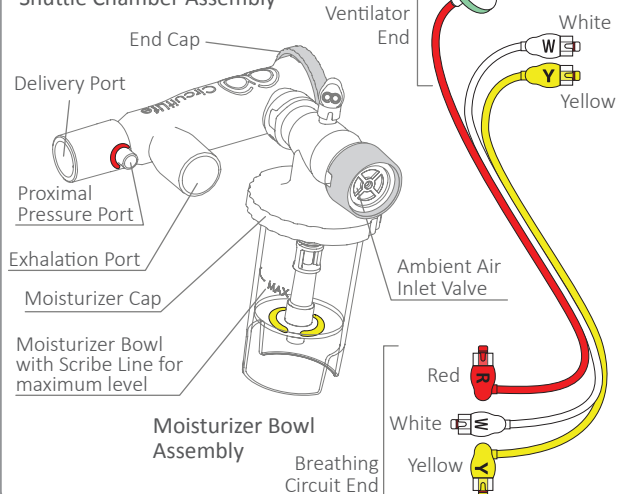


## WARNINGS

1. **Read the IFU in full before applying therapy.**
2. Check all connections for secure fit prior to use.
3. DO NOT block Exhalation Port.
4. DO NOT block Ambient Air Inlet Valve.
5. Use only as directed by physician.
6. To be used by a single patient/user only.
7. To be used only by persons who have been trained in IPV ventilation and with Percussionaire IPV family of ventilators except for the IPV HC/black bag ventilator.
8. Use 0.9% Normal Saline Solution (NSS) only. Use NSS for the duration of therapy session. **Do not administer therapy if Moisturizer Bowl is dry.**

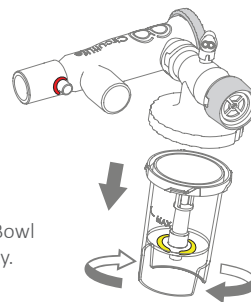
## Harness Assembly

### Shuttle Chamber Assembly



## Step 1

Open the packaging and remove the CLT assembly. Detach the Moisturizer Bowl by rotating it clockwise and pull.



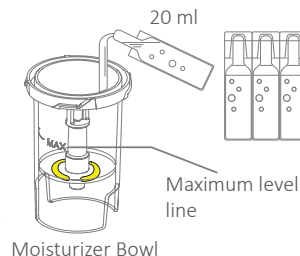
Inspect the Moisturizer Bowl and its sleeve for integrity.

## Step 2

Add up to 20ml of 0.9% NaCl Normal Saline.



DO NOT exceed the maximum level scribe line.

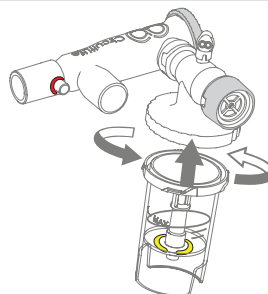


## Step 3

Twist the Moisturizer Bowl counter-clockwise onto the Moisturizer cap until secured tightly.

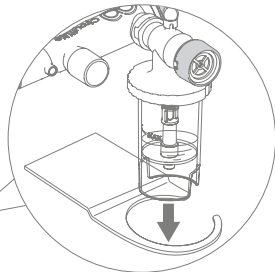
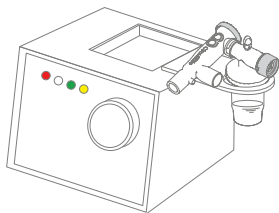


Keep the bowl upright to avoid spilling.



## Step 4

Place the Moisturizer Bowl Assembly into the dedicated Percussionaire bowl holder.



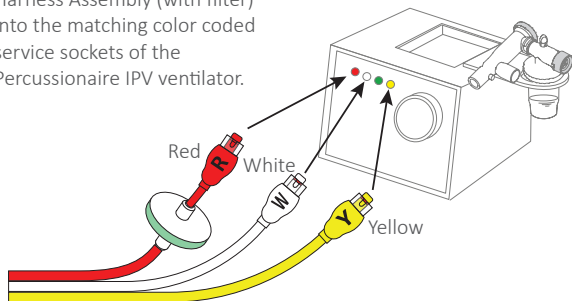
Keep the bowl upright to avoid spilling.

## Step 5

Push and click in to connect the Ventilator End of the Harness Assembly (with filter) into the matching color coded service sockets of the Percussionaire IPV ventilator.



Match color codes of Ventilator End of the Harness Assembly to the IPV ventilator.

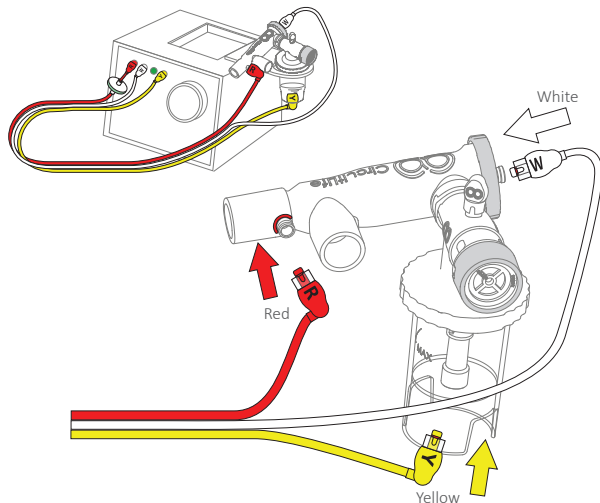


## Step 6

Push and click in to connect the Breathing Circuit End of the Harness Assembly to the CLT-210.



Match color codes of Breathing Circuit End of the Harness Assembly to the CLT-210 ports.



## Step 7: Attach Patient Interface

CLT-210 delivery port of the shuttle chamber will be attached to appropriate standard patient interface accessories.

Setup Complete